

# CIVIL & MECHANICAL EPC CONTRACTORS

**PM**CIVIL  
LIMITADA



**FT PRO-MECÂNICA**  
*INNOVATIVE ENGINEERING*



## ABOUT US

Built on safety and experience, **P.M. CIVIL** is a duly licensed and experienced civil earthworks company that specialises in excavations, site levelling and drainage, and detail and final trimming, among other civil earthworks. With projects in Mozambique and Africa, we are a trusted name in all types of civil earthworks. **P.M. CIVIL** are your trusted experts in civil earthworks.

**FT PRO-MECÂNICA** is a subsidiary of **FORGESTARDIEU**, an engineering group, which has evolved over the past 168 years, from being a simple mechanical workshop and foundry to being an EPC / EPCC / EPCCM Group (Engineering, Procurement, Construction, Commissioning and Management) offering specialized engineering services to the **CANE, OIL & GAS, INDUSTRIAL** and **BUILDING** sectors in Africa, Latin America and Asia.

## CONTENTS

LAND STABILIZATION SOLUTIONS	02
CIVIL WORKS AND WAREHOUSES	04
STORAGE TANKS ERECTION	06
OIL & GAS ENGINEERING	08

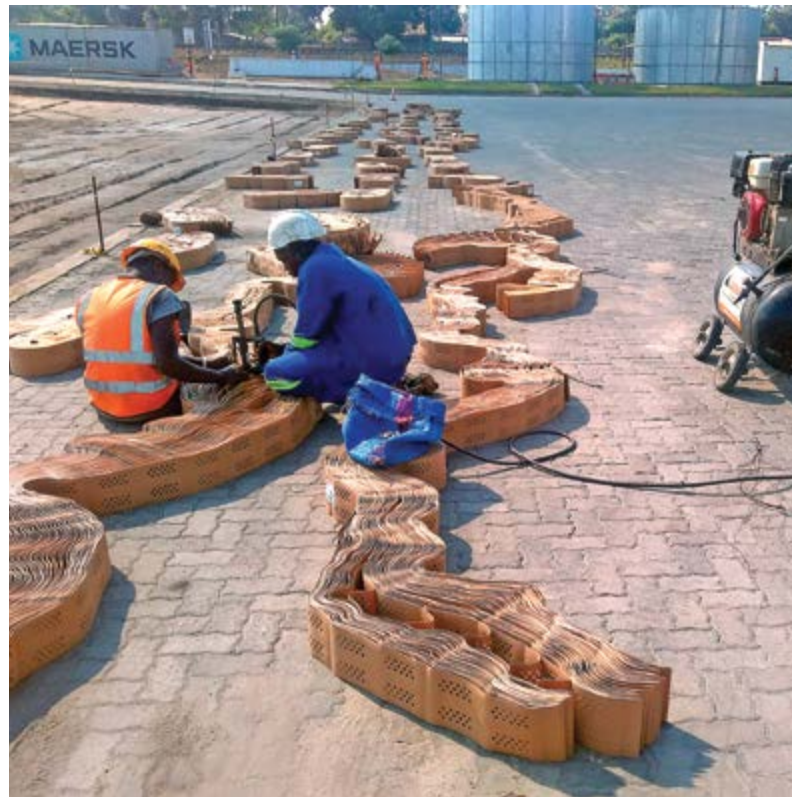
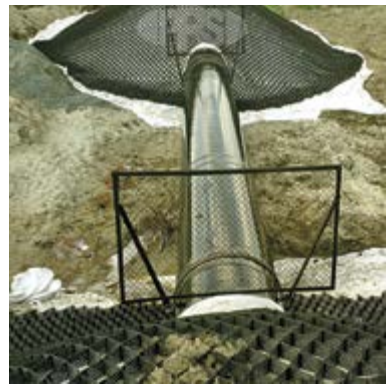


# LAND STABILIZATION SOLUTIONS

PRS Neoloy®  
Geocells

## 3D MECHANICAL STABILIZATION SYSTEM

- > 3D HONEYCOMB
- > COMPOSITE SYSTEM (GEOMETRY + SOIL + POLYMER)
- > UNIQUE POLYMER & CONFINEMENT TECHNOLOGY
- > HIGH RESISTANCE TO PERMANENT DEFORMATION
- > ENGINEERING, ECONOMIC & ENVIRONMENTAL ADVANTAGES



## POLYVALENT USAGE :

- > PIPELINE PROTECTION
- > ROADS SUPPORT
- > GROUND STABILIZATION
- > WORKING PLATFORMS
- > ENABLING PASSAGE OF HEAVY-DUTY EQUIPMENTS



## COST REDUCTION :

- > USE OF LOCAL INFILL
- > LOWER CONSTRUCTION COSTS
- > DURABLE
- > LOWER MAINTENANCE
- > SUSTAINABLE



# CIVIL AND STRUCTURAL WORKS

Turn-key projects on an **EPC / EPCC** basis

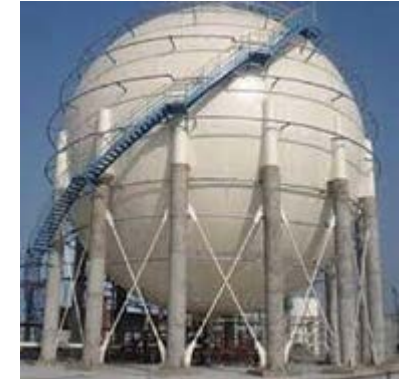
( Engineering / Procurement / Construction / Commissioning )



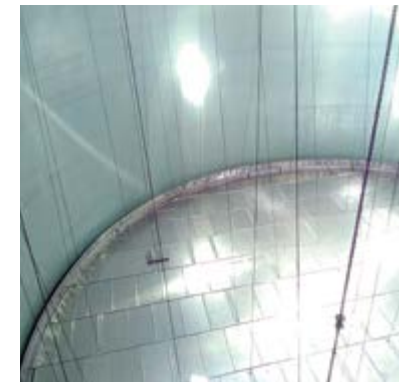
# STORAGE TANKS ERECTIONS

Bulk storage tanks for gas and petroleum products are designed by our engineers as per the latest editions of **CODRES** or **API** standards.

TEAMS OF SUPERVISORS, CODED WELDERS, BOILER MAKERS AND RIGGERS

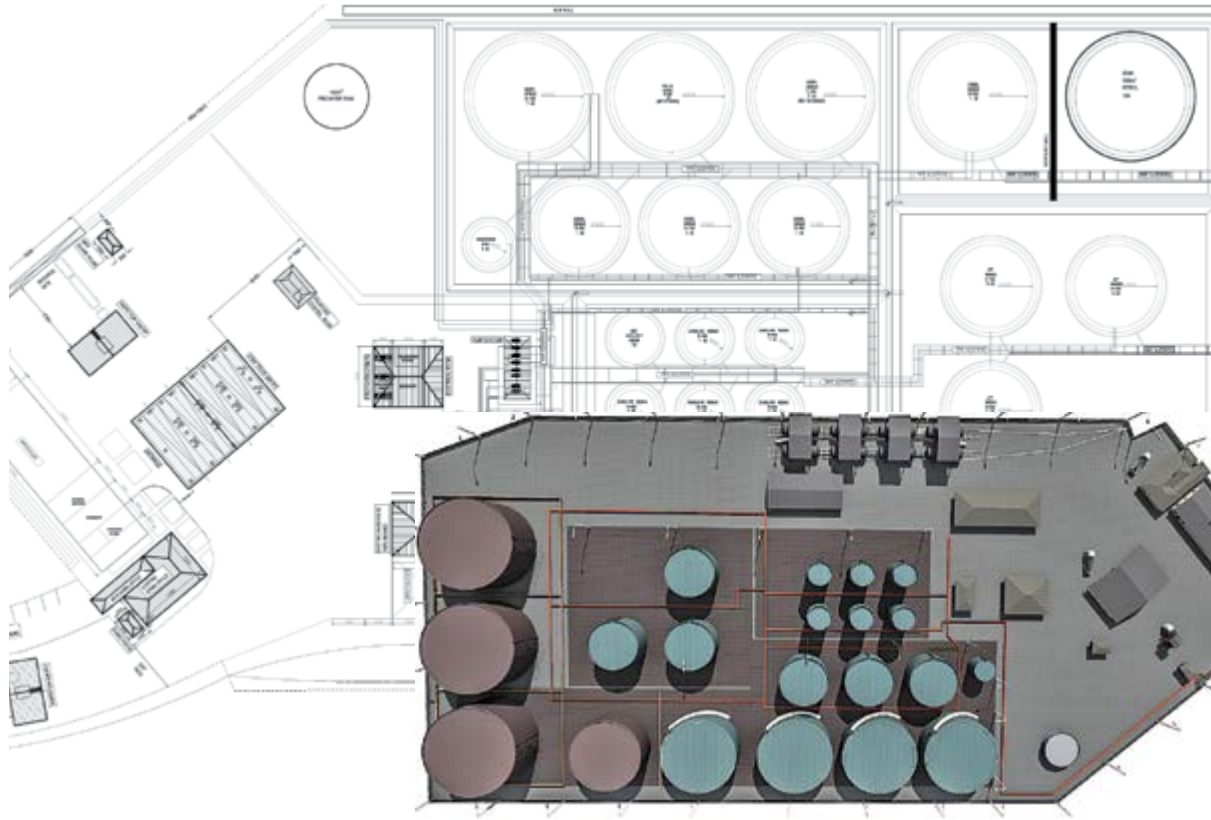


ALUMINUM DOME AND INTERNAL FLOATING ROOF



# ENGINEERING AND DESIGN

- > Consultancy & feasibility studies
- > Engineering and design of tanks, pipelines, loading/unloading gantries
- > Project management
- > Procurement of equipments
- > Erection of steel tanks
- > Automation and instrumentation
- > Testing and commissioning of facilities
- > Terminal management services



**FEASIBILITY STUDIES**

- > MECHANICAL WORKS
- > CIVIL STUDIES & WORKS
- > ELECTRICAL PART
- > CATHODIC PROTECTION
- > COMMISSIONING



**PIPES AND PIPELINES**

- > AIRPORT HYDRANT LINES
- > SEA-PORT SITES
- > PETROLEUM TERMINALS
- > ABOVE-GROUND AND UNDERGROUND PIPES
- > PIPE HEATING SYSTEMS
- > LPG STORAGE





**FT PRO-MECÂNICA**  
INNOVATIVE ENGINEERING

**FT PRO-MECANICA Lda**  
Edifício ROVUMA, Rua da Sé 114  
6º Andar – Escritório 606  
Maputo, Mozambique

**Tel** (+258) 84 413 6015  
**Email** [admin@ftpro-mecanica.com](mailto:admin@ftpro-mecanica.com)  
**Web** [www.forgestardieu.mu](http://www.forgestardieu.mu)

**PM CIVIL**  
LIMITADA

**P.M. CIVIL Lda**  
Av Acordos de Lusaka 1274,  
Munhava, Beira, Mozambique

**Tel** (+258) 23 357 072  
**Email** [hentie@pmcivil.com](mailto:hentie@pmcivil.com)  
**Web** [www.pmcivil.com](http://www.pmcivil.com)